

In 2008 **Sound Diagnostics** is focusing its attention on the expansion of our ultrasound services to bring you greater appointment availability and flexibility. We are also well into the extensive education program planned for the year. Last month saw our third Podiatry education night and also an informative CT update evening.

## Expansion of Ultrasound Services

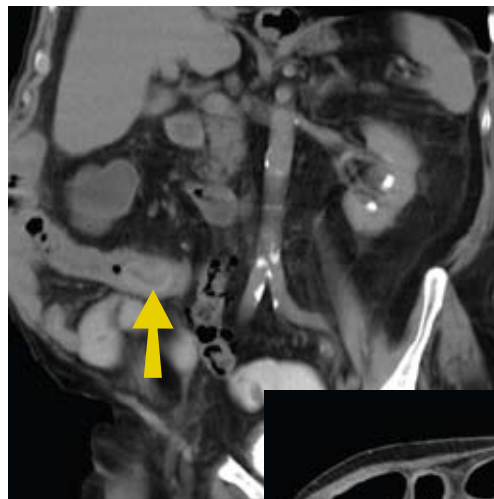
In response to increasing demand, we have installed a second state of the art Phillips IU22 ultrasound machine. Much of the demand has been for ultrasound guided steroid injections and musculoskeletal work, which is an area of special interest here at SD. Demand has been boosted by Medicare changes allowing Podiatrists to refer for ultrasound of the foot and ankle. The addition of the new machine has kept our appointment waiting times to a minimum. We have the capacity to add further ultrasound machines should demand continue to increase.

As our centre is now accredited with the Fetal Medicine Foundation, Dr Lisa Gower has commenced on site nuchal translucency risk assessment counselling. For further information please don't hesitate to contact Lisa.

## Interesting Case – Phytobezoar

A 79 year old male was referred for a CT Abdomen following recurrent small bowel obstructions. Other relevant history was a cholecystectomy a few months prior.

Following the usual preparation with oral and intravenous contrast, scans were performed from the diaphragm to the pubic symphysis. The initial scan showed poor contrast filling of the distal small bowel and a re-scan in 1 hour was performed. An intraluminal abnormality measuring 3.2 cm in diameter was noted in the distal ileum and seemed to be the point of obstruction.



Coronal View

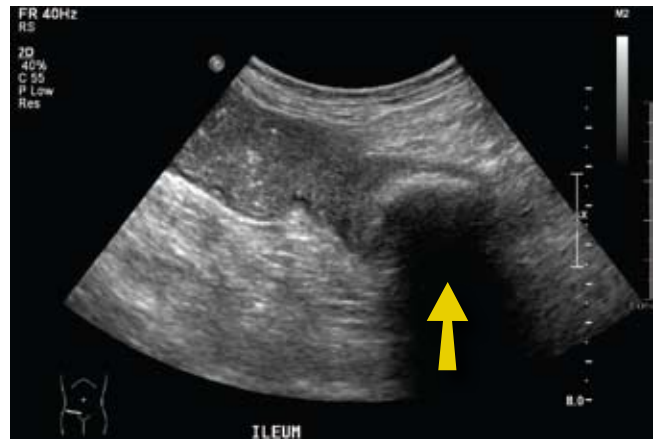
Following a partial hemicolecotomy, the diagnosis of the intraluminal mass was a phytobezoar.

A phytobezoar is radiologically best assessed using CT. It appears as an intraluminal bowel mass with a 'mottled air pattern'. A phytobezoar is made up of undigested vegetable matter. Previous gastric surgery, high fibre diet and abnormal mastication are some of the pre-disposing factors for a phytobezoar.



Axial View

Ultrasound assessment of the phytobezoar showed a densely echogenic mass lying in the distended terminal ileum.



## Education Update



Our next education event is titled **“Complete Women’s Ultrasound at SD”**. Topics will include Obstetric and gynaecological assessments. Implanon removal will also be discussed. This event is to be held on Wednesday 18th June from 6 – 8pm.

For more information or to rsvp please email Sue on [sholmes@sounddiagnostics.com.au](mailto:sholmes@sounddiagnostics.com.au).

We have now held three successful interactive ultrasound evenings on the foot and ankle for our new Podiatry referrers. Over 70 Podiatrists across the state have attended and the feedback has been overwhelmingly positive. Doctors Duthy and Gower have also held an educational seminar entitled **“Practical Guidelines for the use of CT in the Investigation of Common Clinical Problems”**. This was also well attended.

We thank you for your continued support.

The SD team.

