



# Saline HSG

## Patient information

### Saline Hysterosalpingogram (HSG)

A saline HSG is often requested in the investigation of infertility and possible conditions regarding the internal lining of the uterus (endometrium) such as polyps. It is performed in ultrasound and saline (sterile water) is injected into the uterus to highlight the endometrial cavity. No xray radiation is used in this procedure.

### Preparation

A saline HSG is performed between day 4 – 11 of your menstrual cycle. Please ring on the first day of your period to arrange your ultrasound booking. This is to ensure that the procedure does not interfere with an early pregnancy. We ask that you come with a full bladder and not go to the toilet as a pregnancy test will need to be performed prior to your study.

### What to expect

You will be required to change into a patient gown for this procedure with your underwear removed. A baseline transvaginal ultrasound (see Gynae Pelvic Ultrasound Patient Information sheet) is performed to evaluate the uterus and ovaries prior to commencing the saline HSG. Our female Radiologist (specialist doctor) will insert a speculum into the vagina and place a very small catheter into the uterus. This is held in place by inflating a little balloon to stabilize its position. This may cause some cramping like symptoms that should settle. The speculum is then removed and the ultrasound probe is re-inserted. Then the saline is injected and images are taken. After the images are documented, the ultrasound probe is removed and then the Radiologist will deflate the balloon and remove the catheter.

Due to the saline being introduced into the uterus, some blood stained fluid loss can normally be experienced.

Please allow 60 minutes for your examination.

### What to bring

A spare change of underwear and sanitary liners.

You must always bring your request form from your doctor. Please note that we accept all radiology request forms. If you have any previous xrays that may be relevant to your examination, please bring these with you, they can sometimes help to give a more accurate assessment of your presenting condition.

Always bring your Medicare card and any other concession cards.

### Who does my saline HSG?

A university trained Sonographer performs your ultrasound. They are highly trained, skilled and accredited professionals that know how to achieve the best quality images to assess your area of concern.

A Radiologist (a doctor who is a specialist at interpreting the images) looks at all the images taken with your medical history to produce a diagnostic report.

A radiology nurse is sometimes present for this procedure as an assistant to both you and our Radiologist.

### When will I get the report?

Your report will be delivered to your referring practitioner and will be there by lunch on the following business day. If you require your results any earlier, please advise our reception staff and we will ensure they are ready for you.

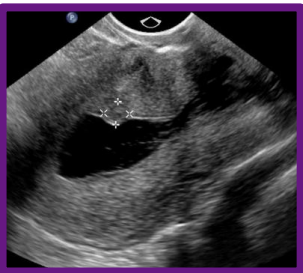
### After care instructions

The following points should be considered following your saline HSG procedure:

- Blood stained fluid loss can be experienced for 24 hours after your procedure (avoid using tampons)
- Some pelvic cramping can be experienced and a mild analgesia (eg Nurofen, Paracetamol) can be taken either prior to, or after your procedure
- If severe cramping, pain or fever present within 48 – 72 hours after your HSG then you must contact your doctor immediately or present to an emergency department

If you have any further questions, please don't hesitate to contact us or consult your referring physician.

Proudly South Australian Owned!



Sound Diagnostic Radiology  
257 Fullarton Road  
PARKSIDE SA

**08 8357 8855**

You will be required to pay for your appointment on the day.

For more information about Sound Diagnostic Radiology please visit our website: [sounddiagnostics.com.au](http://sounddiagnostics.com.au)