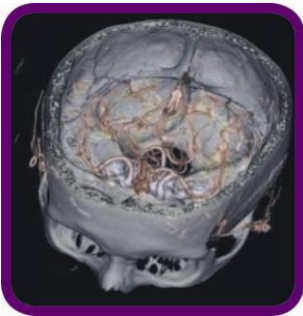




SOUND
DIAGNOSTIC
RADIOLOGY

Proudly
South Australian
Owned!



Sound Diagnostic Radiology
257 Fullarton Road
PARKSIDE SA

08 8357 8855

You will be required to
pay for your appointment
on the day.

For more information about
Sound Diagnostic Radiology
please visit our website:
sounddiagnostics.com.au

CT Scan Head & Sinuses Patient Information

CT Scan of the Head & Sinuses

A CT (Computed Tomography) scan stands for computer generated images of the xray slices through your body. CT imaging uses xrays to produce images of your head and sinuses by spinning the xray tube around your body whilst you are lying flat. At Sound Diagnostic Radiology we use high end digital imaging technology that enables us to be able to reconstruct your CT images into any view, including 3D reconstructions.

Preparation

No preparation is required for a CT of your head and sinuses.

Please notify your doctor and the staff at Sound Diagnostic Radiology if you are a diabetic, have renal disease, have any allergies or you think you could be pregnant.

What to expect

You should try and wear loose fitting clothing to your examination that doesn't contain any metal. However, you may still be required to change into a gown depending on the examination your doctor has requested. As metal objects do show up on xray images, all jewellery, eye glasses, dentures, hearing aids and hair pins maybe asked to be removed prior to your exam.

You will be asked to lie on the CT xray table for your scan. You will often be given a pillow for under your knees to support your legs and keep you comfortable. Your radiographer (CT technician) will explain what will be expected for your study. You will then be moved through the machine and images taken whilst you are lying down.

Occasionally, an injection of clear contrast (dye) is usually given for a CT of the head. This highlights blood vessels and gives different views of your brain. A needle (jelco) is placed into your arm and the contrast is injected into this jelco. A warm 'flush' may be experienced in response to the injection. More images are taken after the injection has been given.

Once all the images are taken your radiographer will ask you to remain on the table until the technologist verifies that the images are of high the highest quality for accurate interpretation.

Allow 10 minutes for your CT scan on your head / sinuses, however, if you have received the injection of dye, you will remain in our lounge for another 15 minutes after your scan before the jelco is removed.

What to bring

You must always bring your request form from your doctor. Please note that we accept all radiology request forms. If you have any previous xrays at home that may be relevant to your examination, please bring these with you, they can sometimes help to give a more accurate assessment of your presenting condition.

Always bring your Medicare card and any other concession cards.

Who does my xray?

A university trained Radiographer performs your CT scan. They are highly trained professionals that know how to achieve the best quality images to assess your area of concern.

A Radiologist (a doctor who is a specialist at interpreting the images) looks at all the CT images taken with your medical history to produce a diagnostic report.

When will I get the report?

Your report will be delivered to your referring practitioner and will be there by lunch on the following business day. If you require your results any earlier, please advise our reception staff and we will ensure they are ready for you.