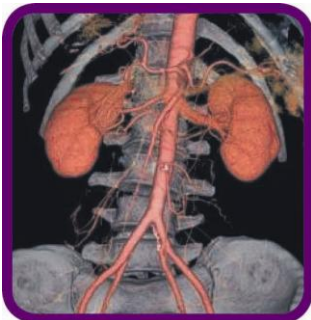




SOUND
DIAGNOSTIC
RADIOLOGY

Proudly
South Australian
Owned!



Sound Diagnostic Radiology
257 Fullarton Road
PARKSIDE SA

08 8357 8855

You will be required to
pay for your appointment
on the day.

For more information about
Sound Diagnostic Radiology
please visit our website:
sounddiagnostics.com.au

CT Scan Abdomen & Pelvis Patient Information

CT Scan of the Abdomen and Pelvis

A CT (Computed Tomography) scan stands for computer generated images of the xray slices through your body. CT imaging uses xrays to produce images of your abdomen and pelvis by spinning the xray tube around your body whilst you are lying flat. At Sound Diagnostic Radiology we use high end digital imaging technology that enables us to be able to reconstruct your CT images into any view, including 3D reconstructions.

Preparation

You will be required to fast from food and drink for 4 hours prior to your appointment. 1 hour prior to your examination you will be required to drink a barium drink. This can be done either in our department, or you can come and collect your drink to have at home prior to your examination.

Please notify your doctor and the staff at Sound Diagnostic Radiology if you are a diabetic, have renal disease, have any allergies or you think you could be pregnant.

What to expect

As with all xray examinations, metal objects overlying the area to be examined show up on your images. Thus, you may be asked to change into a gown for your scan and remove jewellery and other objects. The radiographer will then position you on the CT xray table – usually lying on your back. The table is then moved through the machine while images are taken of your abdomen.

The radiographer will ask you to hold your breath at certain intervals to be able to obtain the best quality images. An injection of clear contrast (dye) is usually given for a CT abdomen / pelvis. This highlights blood vessels and gives different views of your organs. A needle (jelco) is placed into your arm and the contrast is injected into this jelco. A warm 'flush' may be experienced in response to the injection. More images are taken after the injection has been given.

Once the examination is completed, you will be asked to wait until the radiographer verifies that the images are of high enough quality for accurate interpretation by your Radiologist (imaging doctor).

Allow 20 minutes for your CT scan on your abdomen / pelvis, however, if you have received the injection of dye, you will remain in our lounge for another 15 minutes after your scan before the jelco is removed.

You can return to normal activities after your CT scan.

What to bring

You must always bring your request form from your doctor. Please note that we accept all radiology request forms. If you have any previous xrays at home that may be relevant to your examination, please bring these with you, they can sometimes help to give a more accurate assessment of your presenting condition.

Always bring your Medicare card and any other concession cards.

Who does my xray?

A university trained Radiographer performs your CT scan. They are highly trained professionals that know how to achieve the best quality images to assess your area of concern.

A Radiologist (a doctor who is a specialist at interpreting the images) looks at all the CT images taken with your medical history to produce a diagnostic report.

When will I get the report?

Your report will be delivered to your referring practitioner and will be there by lunch on the following business day. If you require your results any earlier, please advise our reception staff and we will ensure they are ready for you.