

# CT at SOUND Diagnostics

Where Technology & Service Excellence come together.

The General Electric (GE) BrightSpeed CT Scanner is capable of high speed imaging, multiplanar and 3D reconstructs with minimal radiation dose.

**The Brightspeed uses Optidose technology which monitors patient dose in 360 degrees while scanning, to ensure the lowest possible radiation dose is administered to each individual patient.**

At Sound Diagnostics we are equipped to carry out all routine CT examinations including sinuses, brains & extremities as well as specialised examinations that require expertise and high speed scanning.



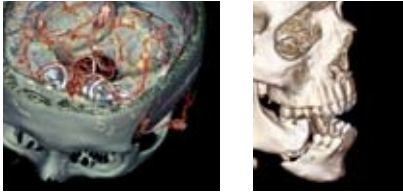
Hooman Mansoori operating CT at Sound Diagnostics

With the use of GE's Digital Data Acquisition System, a routine brain scan is completed in less than 20 seconds & a CT chest scan only requires 9 seconds of exposure. The slice thickness of an examination can also be varied from 10mm to 0.6mm for specialised studies such as petrous bones.

The GE CT scanner is capable of carrying out most angiography examinations including neck, thoracic & abdominal aortagrams, renal and peripheral vessels. 3D facial bone reconstructions, high resolution cerebral studies, chest and lung scans, multiplanar and 3D extremities can be completed in a matter of minutes. Detailed renal stone studies, CT IVP's, triphase liver & kidneys studies can also be carried out. Additionally bone and vessel transparency, curved reformats & virtual bronchoscopies can be reconstructed using GE's specialised software.

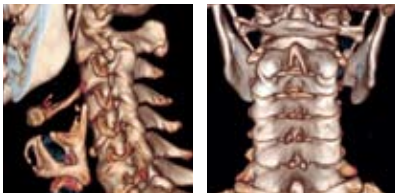
# Services OFFERED at SOUND Diagnostics

## Brain & Facial Bones



- Brain (contrast & non contrast)
- Cerebral Angiography
- Pituitary Fossa
- Paranasal sinuses (Axial, coronal, sagittal, 3D)
- Facial bones (including 3D)
- Orbits
- IAM's & petrous temporal bones
- TMJ's

## Neck



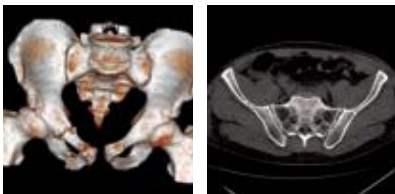
- Cervical spine (Axial, coronal, sagittal, 3D)
- Carotid Angiogram
- Soft tissue neck (with contrast)
- Thyroid, oesophageal & larynx studies
- Parotid glands

## Chest



- Chest (contrast & non contrast)
- Pulmonary Angiograms (PE studies)
- High Resolution Lung Studies
- Thoracic aortogram
- Airways Studies
- Rib fracture studies (3D)
- Virtual Bronchoscopy

## Pelvis



- Pelvic & Hip fracture studies (Axial, coronal, sagittal, 3D)
- Ovarian examinations
- Sacroiliac joint analysis (3D)

## Abdomen



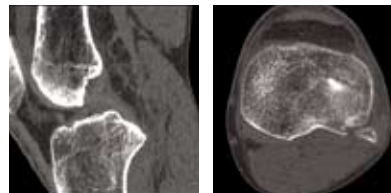
- Abdomen (contrast & non contrast)
- Urograms
- Abdominal Aortogram (AAA's)
- Triple Phase Liver & Kidney studies
- CT IVP
- IV Cholangiogram
- Renal angiograms

## Spine



- Cervical Spine (Axial, coronal, sagittal, 3D)
- Thoracic Spine (Axial, coronal, sagittal, 3D)
- Lumbar Spine (Axial, coronal, sagittal, 3D)
- Sacrum & Coccyx (Axial, coronal, sagittal, 3D)

## Extremities



- Humerus & Shoulder (Axial, coronal, sagittal, 3D)
- Forearm & Elbow (Axial, coronal, sagittal, 3D)
- Hand & Wrist (Axial, coronal, sagittal, 3D)
- Femur, knee & Tibia/Fibula (Axial, coronal, sagittal, 3D)
- Feet & Ankles (Axial, coronal, sagittal, 3D)

## Interventional



- CT Facet Joint injections
- CT Sacroiliac Joints
- CT guided biopsy

At Sound Diagnostics if you require any additional information regarding CT at Sound Diagnostics or to arrange an inhouse demonstration please do not hesitate to contact our CT specialist Hooman Mansoori on **8357 5588** or [hmansoori@sounddiagnostics.com.au](mailto:hmansoori@sounddiagnostics.com.au)

